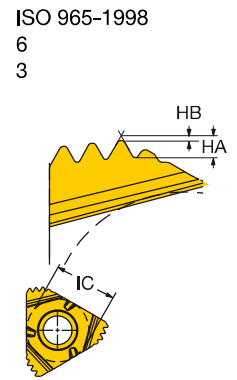
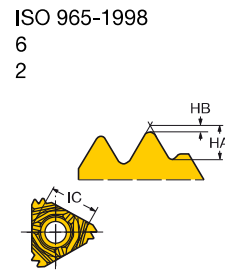
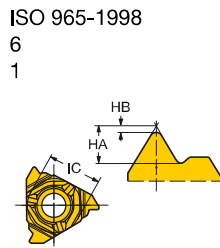
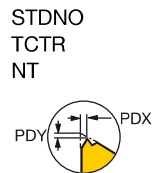
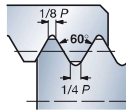
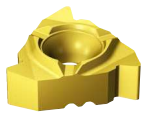


CoroThread® 266 wisselplaat voor draadsnijden

Metrisch 60° Volprofiel



Uitwendige rechtse draad

TP	NT	Bestelcode	Afmetingen, mm																					
			P			M			K			N			S			H			HA	HB	PDX	PDY
			1020	1125	1135	1020	1125	1135	1020	1125	1135	1020	1125	1135	1020	1125	1135	1020	1125	1135				
16	0.50	1	266RG-16MM01A050M	*	*	*	*	*	*	*	*	*	*	*	*	*	*	*	*	0.37	0.08	0.50	1.32	
	0.75	1	266RG-16MM01A075M	*	*	*	*	*	*	*	*	*	*	*	*	*	*	*	*	0.56	0.11	0.50	1.32	
	0.80	1	266RG-16MM01F080E	*	*	*	*	*	*	*	*	*	*	*	*	*	*	*	*	0.60	0.11	0.60	1.32	
	1.00	1	266RG-16MM01A100M	*	*	*	*	*	*	*	*	*	*	*	*	*	*	*	*	0.75	0.15	0.80	1.32	
	1.00	1	266RG-16MM01C100M	*	*	*	*	*	*	*	*	*	*	*	*	*	*	*	*	0.75	0.15	0.80	1.32	
	1.00	1	266RG-16MM01F100E	*	*	*	*	*	*	*	*	*	*	*	*	*	*	*	*	0.75	0.15	0.80	1.32	
	1.25	1	266RG-16MM01A125M	*	*	*	*	*	*	*	*	*	*	*	*	*	*	*	*	0.93	0.19	0.80	1.32	
	1.25	1	266RG-16MM01C125M	*	*	*	*	*	*	*	*	*	*	*	*	*	*	*	*	0.93	0.19	0.80	1.32	
	1.25	1	266RG-16MM01F125E	*	*	*	*	*	*	*	*	*	*	*	*	*	*	*	*	0.93	0.19	0.80	1.32	
	1.50	1	266RG-16MM01A150M	*	*	*	*	*	*	*	*	*	*	*	*	*	*	*	*	1.12	0.22	1.00	1.32	
	1.50	1	266RG-16MM01C150M	*	*	*	*	*	*	*	*	*	*	*	*	*	*	*	*	1.12	0.22	1.00	1.33	
	1.50	1	266RG-16MM01F150E	*	*	*	*	*	*	*	*	*	*	*	*	*	*	*	*	1.12	0.22	1.00	1.32	
	1.75	1	266RG-16MM01A175M	*	*	*	*	*	*	*	*	*	*	*	*	*	*	*	*	1.31	0.25	1.20	1.32	
	1.75	1	266RG-16MM01C175M	*	*	*	*	*	*	*	*	*	*	*	*	*	*	*	*	1.31	0.25	1.20	1.33	
	1.75	1	266RG-16MM01F175E	*	*	*	*	*	*	*	*	*	*	*	*	*	*	*	*	1.31	0.25	1.20	1.32	
	2.00	1	266RG-16MM01A200M	*	*	*	*	*	*	*	*	*	*	*	*	*	*	*	*	1.50	0.29	1.40	1.32	
	2.00	1	266RG-16MM01C200M	*	*	*	*	*	*	*	*	*	*	*	*	*	*	*	*	1.50	0.29	1.40	1.33	
	2.00	1	266RG-16MM01F200E	*	*	*	*	*	*	*	*	*	*	*	*	*	*	*	*	1.50	0.29	1.40	1.32	
	2.50	1	266RG-16MM01A250M	*	*	*	*	*	*	*	*	*	*	*	*	*	*	*	*	1.87	0.36	1.40	1.32	
	2.50	1	266RG-16MM01C250M	*	*	*	*	*	*	*	*	*	*	*	*	*	*	*	*	1.87	0.36	1.40	1.33	
	2.50	1	266RG-16MM01F250E	*	*	*	*	*	*	*	*	*	*	*	*	*	*	*	*	1.87	0.36	1.40	1.32	
	3.00	1	266RG-16MM01A300M	*	*	*	*	*	*	*	*	*	*	*	*	*	*	*	*	2.25	0.42	1.80	1.32	
	3.00	1	266RG-16MM01C300M	*	*	*	*	*	*	*	*	*	*	*	*	*	*	*	*	2.25	0.42	1.80	1.33	
	3.00	1	266RG-16MM01F300E	*	*	*	*	*	*	*	*	*	*	*	*	*	*	*	*	2.25	0.42	1.80	1.32	
22	3.50	1	266RG-22MM01A350M	*	*	*	*	*	*	*	*	*	*	*	*	*	*	*	*	2.62	0.49	2.50	1.67	
	3.50	1	266RG-22MM01F350E	*	*	*	*	*	*	*	*	*	*	*	*	*	*	*	*	2.62	0.49	2.50	1.67	
	4.00	1	266RG-22MM01A400M	*	*	*	*	*	*	*	*	*	*	*	*	*	*	*	*	3.00	0.56	2.50	1.67	
	4.00	1	266RG-22MM01F400E	*	*	*	*	*	*	*	*	*	*	*	*	*	*	*	*	3.00	0.56	2.50	1.67	
	4.50	1	266RG-22MM01A450M	*	*	*	*	*	*	*	*	*	*	*	*	*	*	*	*	3.37	0.63	2.50	1.67	
	5.00	1	266RG-22MM01A500M	*	*	*	*	*	*	*	*	*	*	*	*	*	*	*	*	3.76	0.71	2.50	1.38	
	5.50	1	266RG-22MM01A550M	*	*	*	*	*	*	*	*	*	*	*	*	*	*	*	*	4.13	0.79	2.50	1.08	
	6.00	1	266RG-22MM01A600M	*	*	*	*	*	*	*	*	*	*	*	*	*	*	*	*	4.51	0.86	2.80	0.88	

Uitwendige rechtse draad - multipunt wisselplaat

TP	NT	Bestelcode	Afmetingen, mm																				
			P			M			K			N			S			HA	HB	PDX	PDY		
			1020	1125	1135	1020	1125	1135	1020	1125	1135	1020	1125	1135	1020	1125	1135						
16	1.00	3	266RG-16MM03A100M	*	*	*	*	*	*	*	*	*	*	*	*	*	*	*	*	0.75	0.15	2.50	1.62
	1.25	2	266RG-16MM02A125M	*	*	*	*	*	*	*	*	*	*	*	*	*	*	*	*	0.96	0.09	2.25	1.41
	1.50	2	266RG-16MM02A150M	*	*	*	*	*	*	*	*	*	*	*	*	*	*	*	*	1.12	0.22	2.20	1.42
	1.75	2	266RG-16MM02A175M	*	*	*	*	*	*	*	*	*	*	*	*	*	*	*	*	0.93	0.19	1.90	1.33
	2.00	2	266RG-16MM02A200M	*	*	*	*	*	*	*	*	*	*	*	*	*	*	*	*	1.50	0.29	2.90	1.91
22	2.50	2	266RG-22MM02A250E	*	*	*	*	*	*	*	*	*	*	*	*	*	*	*	*	1.87	0.36	3.75	1.97
	3.00	2	266RG-22MM02A300E	*	*	*	*	*	*	*	*	*	*	*	*	*	*	*	*	2.25	0.42	4.40	2.76

R = rechts



C30



C39



C73



C83



H36



H35



H26

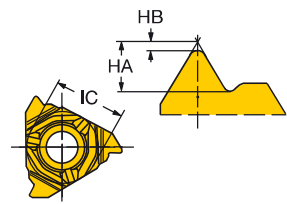
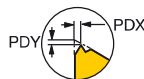
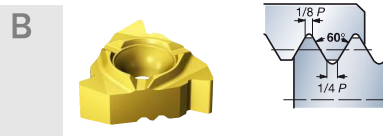


CoroThread® 266 wisselplaat voor draadsnijden

Metrisch 60° Volprofiel

STDNO
TCTR

ISO 965-1998
IT 6



C **Uitwendige linkse draad**

TP	NT	Bestelcode	Afmetingen, mm						HA	HB	PDX	PDY		
			P	M	K	N	S	H						
16	0.50	1	266LG-16MM01A050M	★	★	★	★	★	★	☆	0.37	0.08	0.50	1.32
	0.75	1	266LG-16MM01A075M	★	★	★	★	★	★	☆	0.56	0.11	0.50	1.32
	1.00	1	266LG-16MM01A100M	★	★	★	★	★	★	☆	0.75	0.15	0.80	1.32
	1.25	1	266LG-16MM01A125M	★	★	★	★	★	★	☆	0.93	0.19	0.80	1.32
	1.50	1	266LG-16MM01A150M	★	★	★	★	★	★	☆	1.12	0.22	1.00	1.32
	1.75	1	266LG-16MM01A175M	★	★	★	★	★	★	☆	1.31	0.25	1.20	1.32
	2.00	1	266LG-16MM01A200M	★	★	★	★	★	★	☆	1.50	0.29	1.40	1.32
	2.50	1	266LG-16MM01A250M	★	★	★	★	★	★	☆	1.87	0.36	1.40	1.32
	3.00	1	266LG-16MM01A300M	★	★	★	★	★	★	☆	2.25	0.42	1.80	1.32
22	3.50	1	266LG-22MM01A350M	★	★	★	★	★	★	☆	2.62	0.49	2.50	1.67
	4.00	1	266LG-22MM01A400M	★	★	★	★	★	★	☆	3.00	0.56	2.50	1.67
	4.50	1	266LG-22MM01A450M	★	★	★	★	★	★	☆	3.37	0.63	2.50	1.67
	5.00	1	266LG-22MM01A500M	★	★	★	★	★	★	☆	3.76	0.71	2.50	1.38
	5.50	1	266LG-22MM01A550M	★	★	★	★	★	★	☆	4.13	0.79	2.50	1.08
	6.00	1	266LG-22MM01A600M	★	★	★	★	★	★	☆	4.51	0.86	2.80	0.88

E L = links

F

G

H



C 8



A

DRAADSNIJDEN

Wisselplaten

CoroThread® 266 wisselplaat voor draadsnijden

Metrisch 60° Volprofiel

STDNO
TCTRISO 965-1998
IT 6

B

C

Inwendige linkse draad

TP	NT	Bestelcode	Afmetingen, mm						HA	HB	PDX	PDY		
			P	M	K	N	S	H						
16	0.50	1	266LL-16MM01A050M	★	★	★	★	★	★	☆	0.32	0.03	0.50	1.30
	0.75	1	266LL-16MM01A075M	★	★	★	★	★	★	☆	0.47	0.04	0.50	1.30
	1.00	1	266LL-16MM01A100M	★	★	★	★	★	★	☆	0.64	0.06	0.80	1.30
	1.25	1	266LL-16MM01A125M	★	★	★	★	★	★	☆	0.79	0.07	0.80	1.30
	1.50	1	266LL-16MM01A150M	★	★	★	★	★	★	☆	0.96	0.09	1.00	1.30
	1.75	1	266LL-16MM01A175M	★	★	★	★	★	★	☆	1.11	0.11	1.20	1.30
	2.00	1	266LL-16MM01A200M	★	★	★	★	★	★	☆	1.27	0.12	1.40	1.30
	2.50	1	266LL-16MM01A250M	★	★	★	★	★	★	☆	1.59	0.16	1.40	1.30
	3.00	1	266LL-16MM01A300M	★	★	★	★	★	★	☆	1.92	0.19	1.80	1.30
22	3.50	1	266LL-22MM01A350M	★	★	★	★	★	★	☆	2.24	0.26	2.50	1.64
	4.00	1	266LL-22MM01A400M	★	★	★	★	★	★	☆	2.56	0.30	2.50	1.64
	4.50	1	266LL-22MM01A450M	★	★	★	★	★	★	☆	2.89	0.33	2.50	1.64
	5.00	1	266LL-22MM01A500M	★	★	★	★	★	★	☆	3.21	0.38	2.50	1.35
	5.50	1	266LL-22MM01A550M	★	★	★	★	★	★	☆	3.54	0.40	2.50	1.06
	6.00	1	266LL-22MM01A600M	★	★	★	★	★	★	☆	3.86	0.47	2.40	0.87

E

L = links

F

G

H

C30

C39

C73

C83

H36

H35

H26

C 10